



FEATURES:



10 Occupancy



4 Bedroom



3 Bathroom



2 Car Parking

ABOUT THIS PROPERTY

This impressive 4 bedroom chalet is the perfect place to enjoy all that Dinner Plain and Mt Hotham has to offer. Its large enough to accommodate multiple families with plenty of space for everyone. The beautiful living areas allow everyone to relax in front of the wood fire at the end of the day and create some memories with family and friends.

The Dinner Plain beginners ski run and cross-country trails are a short walk away as are the local cafes, restaurants and shops. If youre heading to Mt Hotham, you can easily walk to the shuttle stop which does a loop of the village.

During the green season, the chalet is just steps away from the walking tracks.

KITCHEN & COOKING FACILITIES

Full Kitchen
Full Size Fridge
Dishwasher
Microwave
Coffee Pod Machine
Full Size Oven
4 Burner Cooker

BEDROOMS & BEDDING CONFIGURATION

This property sleeps 10 people.

There are 4 Bedrooms with the following configuration.

Bedroom 1: 1 x Queen Bed

Bedroom 2: 1 x Queen Bed, 1 x Single Bed

Bedroom 3: 1 x Single Bed, 1 x Single Bunk Bed

Bedroom 4: 1 x Queen Bed

Linen, Towels and Bedding is provided for all beds.

BATHROOMS

3 Bathrooms - all consisting of a shower & toilet

HEATING & COOLING FACILITIES

Heating - Electric Panel
Heating - Combustion Log Fire

LAUNDRY DETAILS

Washing Machine
Tumble Dryer
Drying Room for Ski Gear

ENTERTAINMENT FACILITIES

Smart TV
WiFi Internet

PARKING

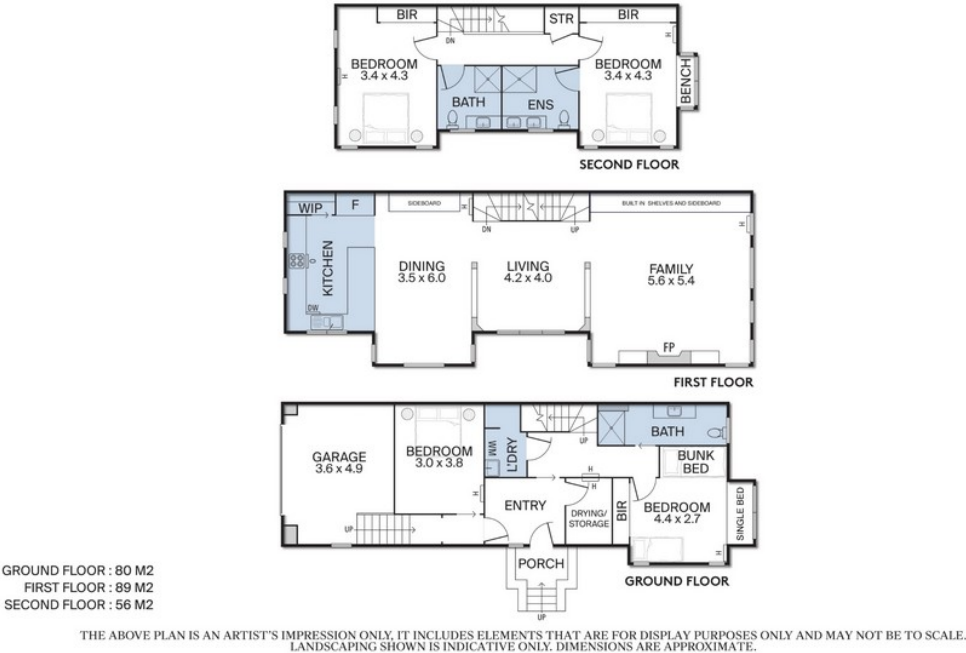
2 car spaces
Car Parking - Garaged
Car Parking - Driveway

PETS

Strictly no pets accepted

SMOKING

Strictly no smoking indoors



CASTRAN