



FEATURES:



14 Occupancy



4 Bedroom



2 Bathroom



2 Car Parking



Dish Washer



Strict NO Party Policy



Strict NO Pets Accepted



Washing Machine



BBQ

ABOUT THIS PROPERTY

Wrens View is a classic Dinner Plain Chalet with exposed beams and beautiful views. With three levels and 3 bedrooms and spacious loft, it is the perfect property for family or group gatherings.

The loft is a great space for kids or a small family to have their own retreat when looking for some quiet time away from the larger group. Wrens view has recently upgraded all beds so you will be sleeping in luxury!

KITCHEN & COOKING FACILITIES

Fully self-contained kitchen. 2 ovens, Dishwasher, Gas Stove. Open plan Kitchen, Living & Dining.

BEDROOMS & BEDDING CONFIGURATION

Bedroom 1 - 1 x King

Bedroom 2 - 1 x King

Bedroom 3 - 2 x Bunks (4 singles)

Loft - 4 x Single and 1 x King

BATHROOMS

Ground Floor: Bathroom with Spa, separate toilet.

First Floor: Bathroom with Shower & Bath. Separate toilet.

HEATING & COOLING FACILITIES

Wood fireplace & Central heating.

LAUNDRY DETAILS

Washing Machine & Dryer. Spacious Drying room.

ENTERTAINMENT FACILITIES

- Television
- DVD Player
- iPod docking system (iPhone 4 compatible)

EXTRA FACILITIES

Spa in ground floor Bathroom. Pool table in Loft.

Wrens View

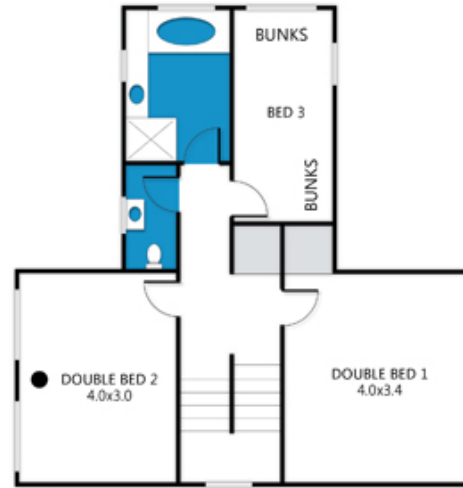
28 Halter Lane, Dinner Plain, VIC. 3898

Wrens View

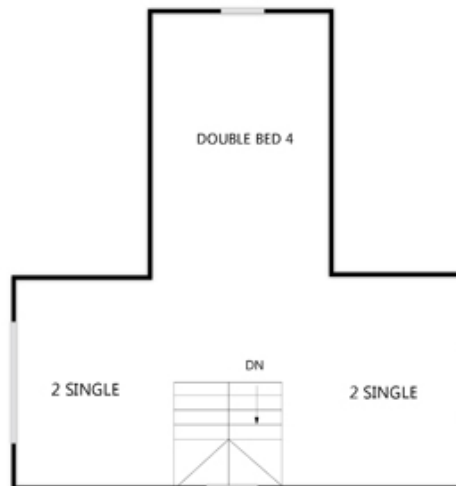
28 Halter Lane, Dinner Plain



GROUND FLOOR



FIRST FLOOR



SECOND FLOOR

archistyle

Whilst every attempt has been made to ensure the accuracy of this floorplan, measurements of doors, windows, rooms and any other items are approximate only. The producer or the agent cannot be held responsible for any errors, omissions or misstatements. This plan is for illustrative purposes only and should be used as such.

Wrens View

28 Halter Lane, Dinner Plain, VIC. 3898

